

END FITTINGS

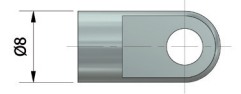
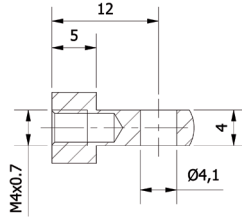
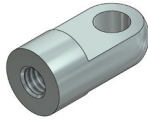
For gas spring 12-4



5. Loop M4

Steel
Galvanized

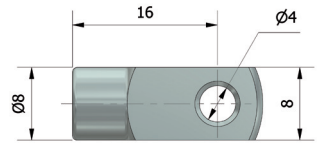
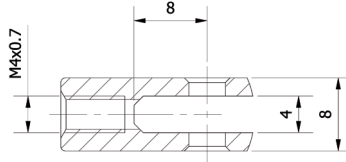
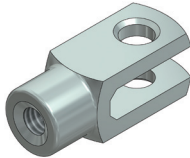
Part no: 600



7. Clevis M4

Steel
Galvanized

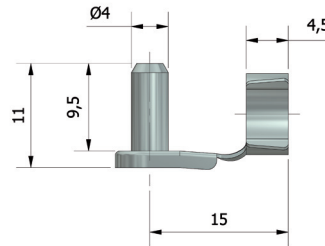
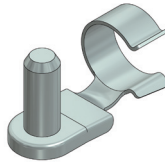
Part no: 601



8. Locking clip

Steel
Galvanized
Fits no. 7

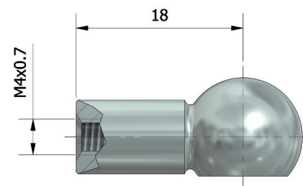
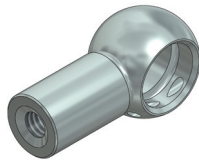
Part no: 602



9. Ball cup M4, Ø 8

Steel
Galvanized
Lockwire included

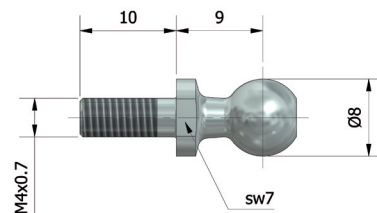
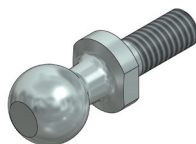
Part no: 603



12. Ball stud M4, Ø 8

Steel
Galvanized

Part no: 604



END FITTINGS

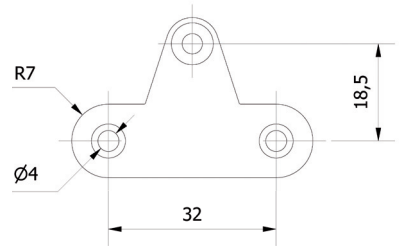
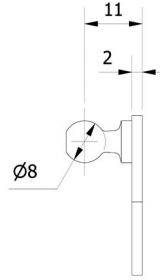
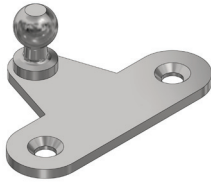
For gas spring 12-4



32. Ball bracket Ø 8

Steel
Galvanized

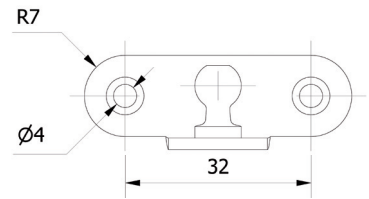
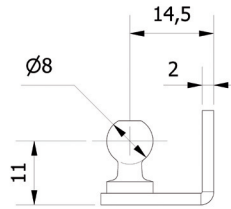
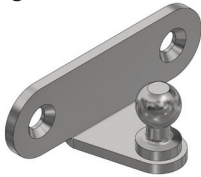
Part no: 605



33. Ball bracket Ø 8

Steel
Galvanized

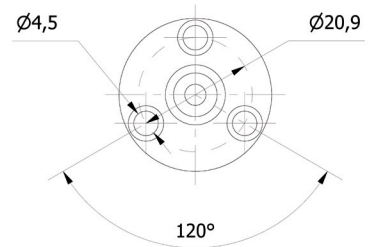
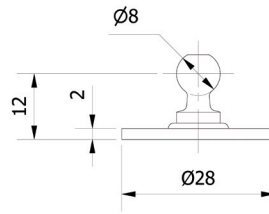
Part no: 606



34. Ball bracket Ø 8

Steel
Galvanized

Part no: 607



END FITTINGS

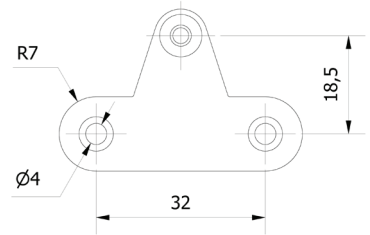
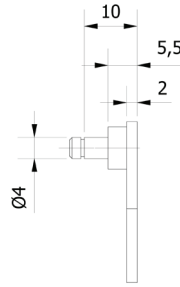
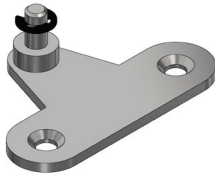
For gas spring 12-4



35. Bracket

Steel
Galvanized
Locking clip included

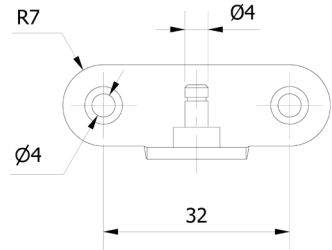
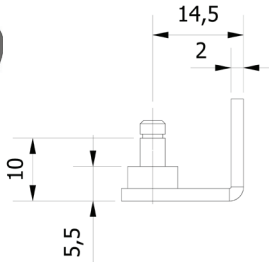
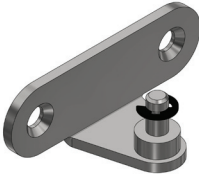
Part no: 608



36. Bracket

Steel
Galvanized
Locking clip included

Part no: 609



37. Bracket

Steel
Galvanized
Locking clip included

Part no: 610

