

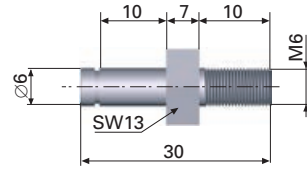
# END FITTINGS

Anchors and brackets

## AS1. Anchor

Steel  
Galvanised  
Locking clip included

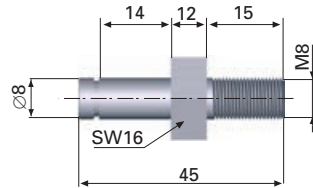
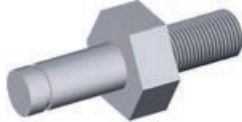
Cat.no: 6412



## AS2. Anchor

Steel  
Galvanised  
Locking clip included

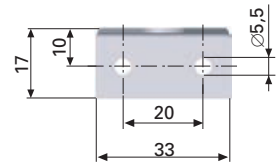
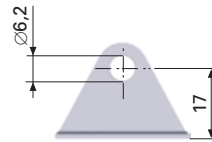
Cat.no: 6411



## BK3. Bracket

For light applications  
Steel  
Galvanised  
Bolt and locking clip included

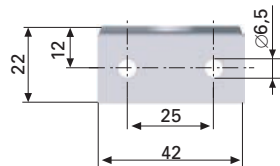
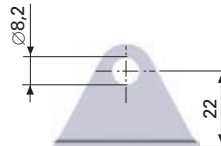
Cat.no: 6410



## BK4. Bracket

For light applications  
Steel  
Galvanised

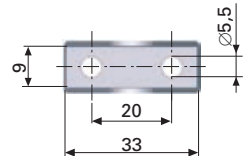
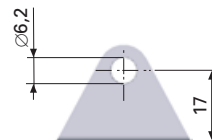
Cat.no: 6409



## BK1. Bracket

For light applications  
Steel  
Galvanised  
Bolt and locking clip included

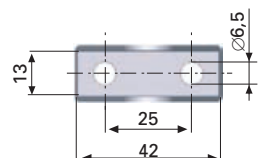
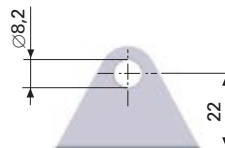
Cat.no: 6408



## BK2. Bracket

For light applications  
Steel  
Galvanised  
Bolt and locking clip included

Cat.no: 6407



# END FITTINGS

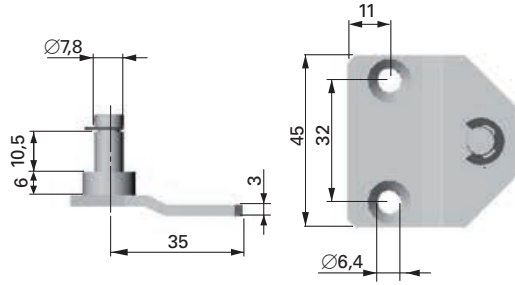
Brackets, extensions, clevises and locking clips



## BK5. Bracket

Steel  
Galvanised  
Locking clip included

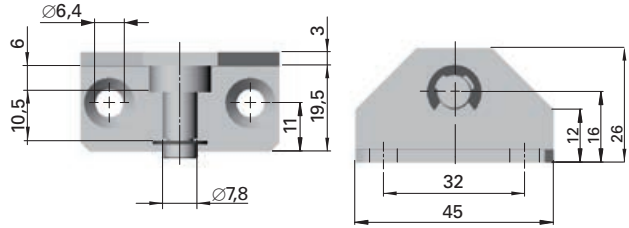
Cat.no: 4623



## BK6. Bracket

Steel  
Galvanised  
Locking clip included

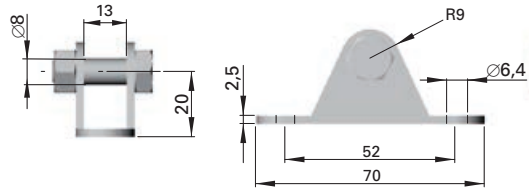
Cat.no: 4624



## BK7. Bracket

Steel  
Galvanised  
Bolt and nut included

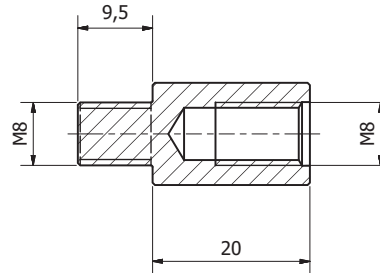
Cat.no: 4628



## EX1. Extension

Steel 11SMnPb30+C  
Electroplated ZnNi,  
black

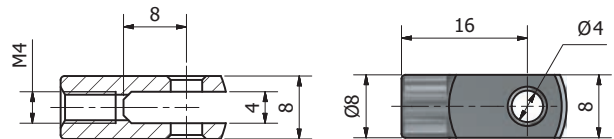
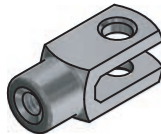
Cat.no: 5660



## G1. Clevis M4

Steel  
Galvanized

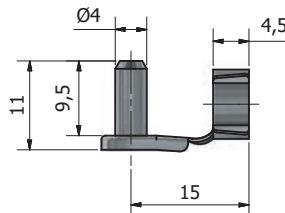
Cat.no: 601



## G2. Locking clip

Steel  
Galvanized

Cat.no: 602

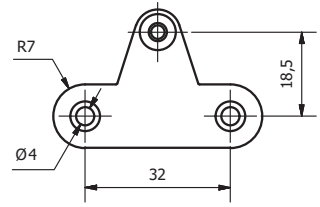
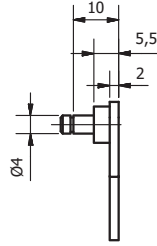
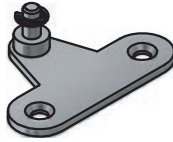




### BK18. Bracket

Steel  
Galvanized  
Locking clip included

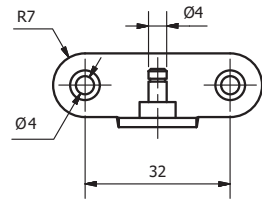
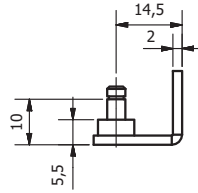
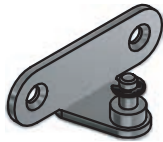
**Cat.no: 608**



### BK19. Bracket

Steel  
Galvanized  
Locking clip included

**Cat.no: 609**



### BK20. Bracket

Steel  
Galvanized  
Locking clip included

**Cat.no: 610**

